



E8

Entry Level

E8 Series— affordable, compact and versatile

Lightweight, Compact structure

E8 series adopts our innovative upright design, weighing less than 500grams (including the battery), it is designed to fit into the palm of your hand.

Intelligent design, easy to operate

All of the control buttons are easy to reach, combined with the new improved menu, the user can control the camera with the touch of a button.

Powerful analysis functions

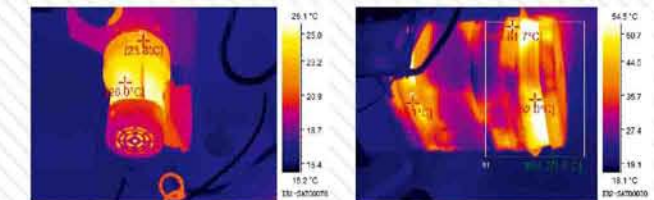
Up to 10 spot temperature points, automatic max/min spot capture, line analysis, regional analysis and isotherm.



Ergonomic design, light weight, compact, convenient one-handed operation, large number of functions, great expandability, similar quality camera for cheaper now, the E8 series is probably the most desirable compact thermal imaging camera in the world. The weight of the camera including the battery is less than 500g and with its unique design fits smoothly into the palm of your hand.

Analysis function

Up to 10 spot temperature points, automatic max/min spot capture, line analysis, regional analysis and isotherm.



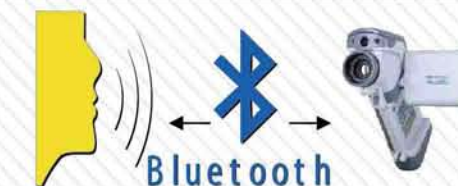
Multi-functional docking station

The multi-functional docking station with integrated battery charging, video output, tripod mounting and USB connection enables the E8 to connect with a PC for real-time radiometric data recording and analysis.



Bluetooth

Users can add voice annotation to the thermal images via a Bluetooth headset. The recording can be saved with the thermal image and can be played back in the headset or using the SatlrReport software.



Duo-vision

The E8 series can take high quality "Duo Vision" images which aids interpretation through thermal and visual blending. The user can move the infrared image overlay and alter the transparency to suit their application.



Industrial Thermal Imager Series



L-ion battery for continuous use

Large capacity L-ion battery combined with innovatively designed energy conversion modes enables the E8 series to continuously work for over three hours.



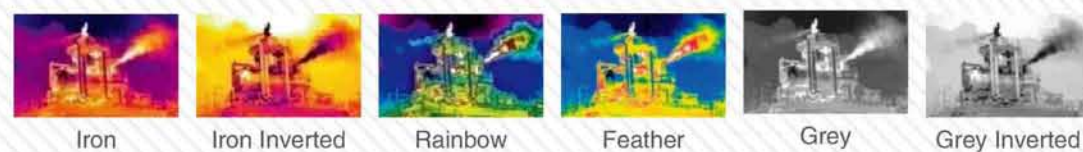
Ten languages

English/French/German/
Italian/Spanish/Portuguese/
Chinese/Japanese/Russian/
Korean



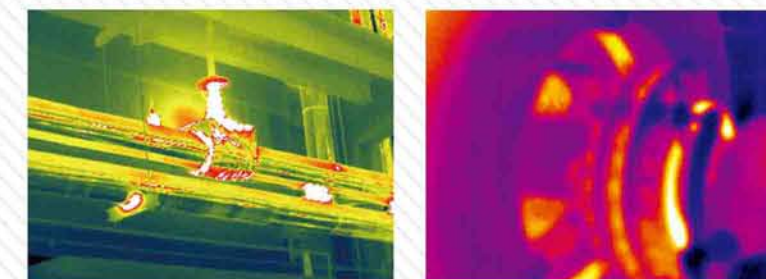
Six colour palettes

Iron/Iron Inverted/Rainbow/Feather/Grey/Grey Inverted



Meeting different industries, the essential tool for energy saving applications

E8 Series– affordable,
compact and versatile



Type		E8
Image performance		
FOV/Min. focus distance		20° x15° /0.1m
Spatial resolution		2.2 mrad
Thermal sensitivity		≤0.08℃ @30℃
Detector type		UFPA (Uncooled focal plane array)
Detector resolution		160 x120
Spectral range		8–14um
Focus		Manual
Image presentation		
Image mode	IR	Yes
	CCD	Optional
	Duo–vision	Optional
Video output frequency		NTSC (60Hz) or PAL (50Hz) full dynamic output
LCD Display		3” TFT screen
Temperature measurement		
Measure range		–20℃~+250℃ (up to 1500℃,optional)
Accuracy		± 2℃ or ± 2% of readings
Image storage		
Type		Removable SD card(up to16GB)
Physical characteristic		
Weight		less than 500g
Additional features		
illuminator		Optional
Laser pointer		Yes
USB2.1 real–time transfer		Optional
Bluetooth		Optional